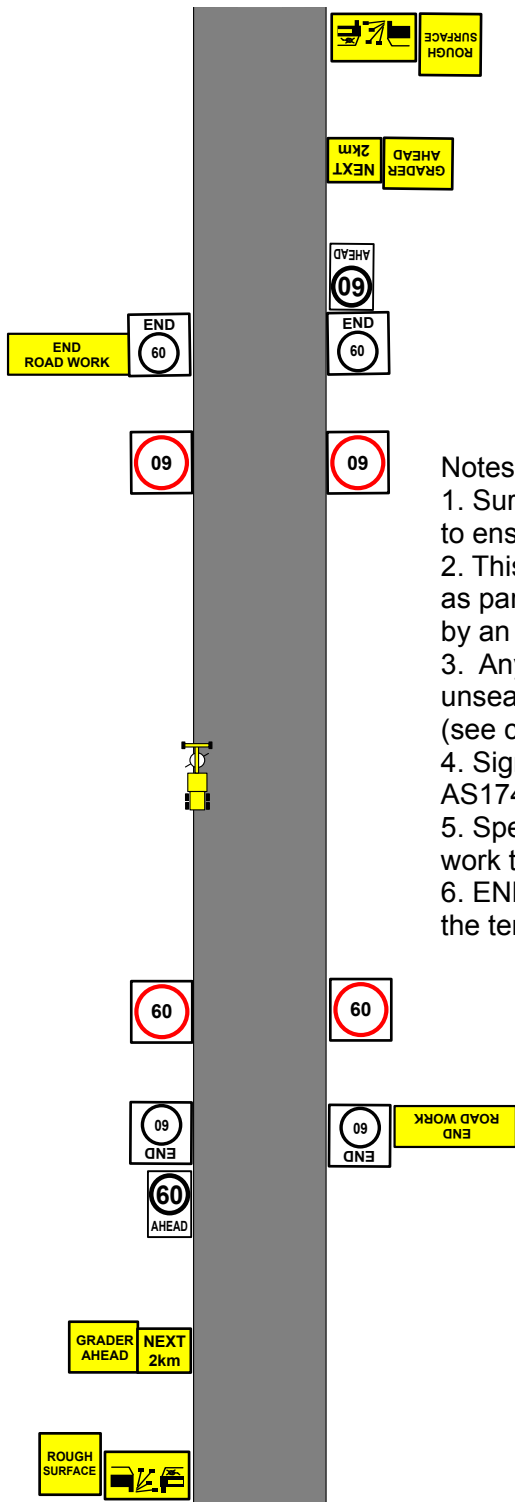


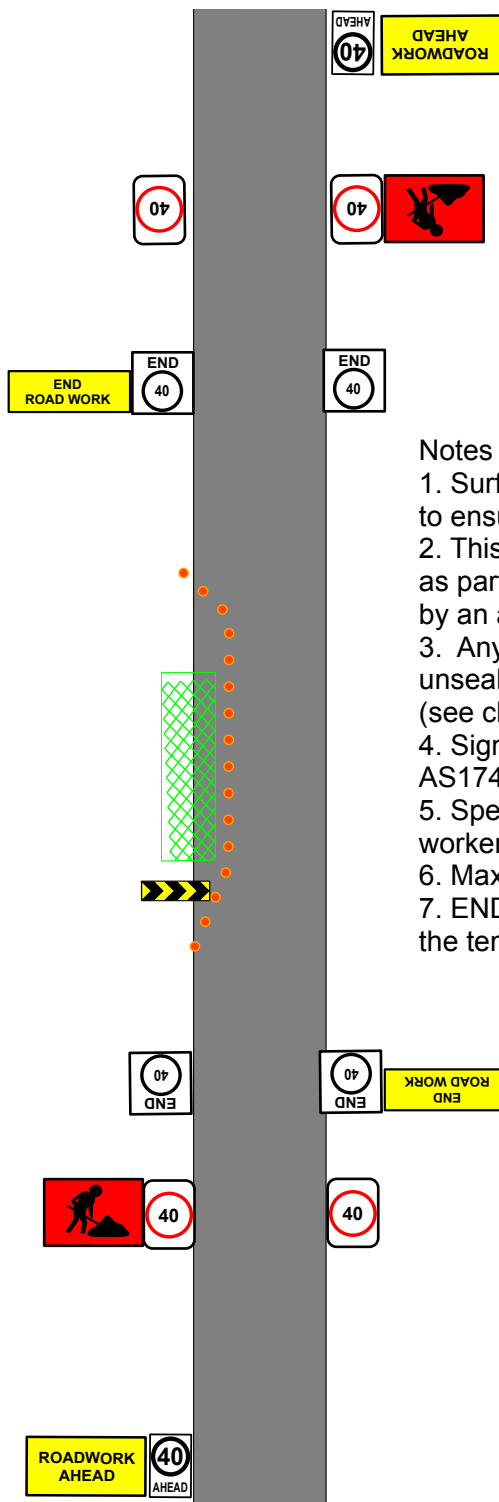
Example 1: Temporary 60 km/h on Unsealed Road



Notes

1. Surface condition shall be inspected and maintained to ensure any temporary speed limit is acceptable.
2. This is an example only and shall only be used as part of a traffic management plan prepared by an accredited AWTM.
3. Any traffic management implemented on unsealed roads shall be based on a risk assessment (see clause 4.5 of AS1742.3)
4. Sign and device spacing shall comply with AS1742.3
5. Speed signs shall be removed outside of work times.
6. END speed limit (4R-12) signs shall be used to end the temporary speed zone

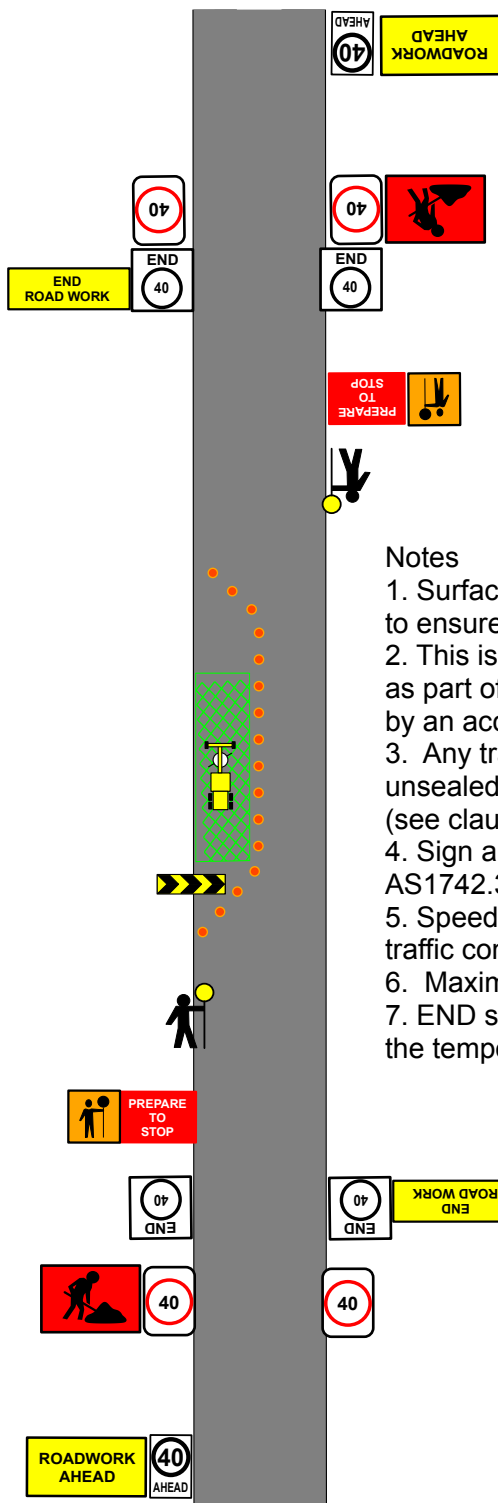
Example 2: Temporary 40 km/h on Unsealed Road



Notes

1. Surface condition shall be inspected and maintained to ensure any temporary speed limit is acceptable.
2. This is an example only and shall only be used as part of a traffic management plan prepared by an accredited AWTM.
3. Any traffic management implemented on unsealed roads shall be based on a risk assessment (see clause 4.5 of AS1742.3)
4. Sign and device spacing shall comply with AS1742.3
5. Speed reduction signs shall only be in place while workers are onsite
6. Maximum length of 40 km/h is 500 m.
7. END speed limit (4R-12) signs shall be used to end the temporary speed zone

Example 3: Use of Traffic Controllers on Unsealed Road



Notes

1. Surface condition shall be inspected and maintained to ensure any temporary speed limit is acceptable.
2. This is an example only and shall only be used as part of a traffic management plan prepared by an accredited AWTM.
3. Any traffic management implemented on unsealed roads shall be based on a risk assessment (see clause 4.5 of AS1742.3)
4. Sign and device spacing shall comply with AS1742.3
5. Speed reductions signs shall only be in place while traffic controllers and/or workers are on site.
6. Maximum length of 40 km/h is 500 m.
7. END speed limit (4R-12) signs shall be used to end the temporary speed zone